

DCRPROGETTI s.r.l.

Progettazione e Consulenza

COY
CERTIQUALITY
7232



Viale dei Mille 19 – 20129 Milano
Tel 02.29401516
info@dcprogetti.it – www.dcrprogetti.it

INTRODUCTION

DCRPROGETTI is an engineering company with competences, organization and potentialities capable to intervene with great flexibility in both design and consulting.

The experiences in decades of activity in Italy and abroad allow to us to face and solve different issues and types of intervention in the field of structural, architectural and safety building construction.

We have agreement with some of the most important Engineering company and we perform design or support's activity to design as much as work management and supervision of construction site.

ACTIVITIES

The design capability of DCRPROGETTI are in the following fields:

- Design of steel structures, reinforced concrete structures and prestressed reinforced concrete structures in the industrial, civil and infrastructural field, in accordance with the Italian and foreign codes (Eurocodes, B.S., ACI, AISC, DNV, API, AS, NZ, etc.).
- Structural analysis of offshore platforms included fatigue analyses.
- Design of modular solutions and analysis in different construction phases: loadout/loadin procedure, road and sea transport, lifting and operating conditions.
- Development of analysis of finite elements for linear and nonlinear analyses in static, dynamic and thermal field.
- Seismic analysis to check the vulnerability of existing buildings in civil and industrial field.
- Development of feasibility, basic and detailed studies of architectural design with specific techniques, Material Take Off (MTO) and Bill of Material (BOM).
- Architectural design both basic and detailed, of scholastic, hospital, sports, industrial, managerial-commercial building, public and private residential building.
- Upgrading of Building.
- Mechanic and electric design for civil and industrial building.
- Project document analysis of tenders bids.
- Work management, work planning, assistance and supervision of construction site.
- Works Coordination in the planning and execution phases in compliance with Decree 81/2008 concerning the safety construction sites.
- Thermal analysis of buildings and fire protection design.



OIL&GAS TREATMENT PLANT PROJECT

(Khursaniyah – ARAMCO - Saudi Arabia)

Customer: Snamprogetti S.p.A.

**REVAMPING OF 5
PLATFORMS IN ASHTART
FIELD**

(Tunisia)

Customer: Saipem Energy
International S.p.A.



OIL&GAS TREATMENT PLANT PROJECT

(Khurais - ARAMCO - Saudi Arabia)

Customer: Snamprogetti S.p.A.



OIL&GAS TREATMENT PLANT PROJECT

(Qatif – ARAMCO – Saudi Arabia)

Customer: Snamprogetti S.p.A.

CONSTRUCTION OF LIBRARY, CIVIC CENTER

Customer: Municipality of
Mozzo - Bergamo



DESIGN OF JACKET OF GAS EXTRACTION AGIP TEMSAH PLATFORM

(Egypt)

Customer: SASP Offshore Engineering S.p.A.



STAND ALONE GAS CONFIGURATION FEED PROJECT

(Ebocha – Nigeria)

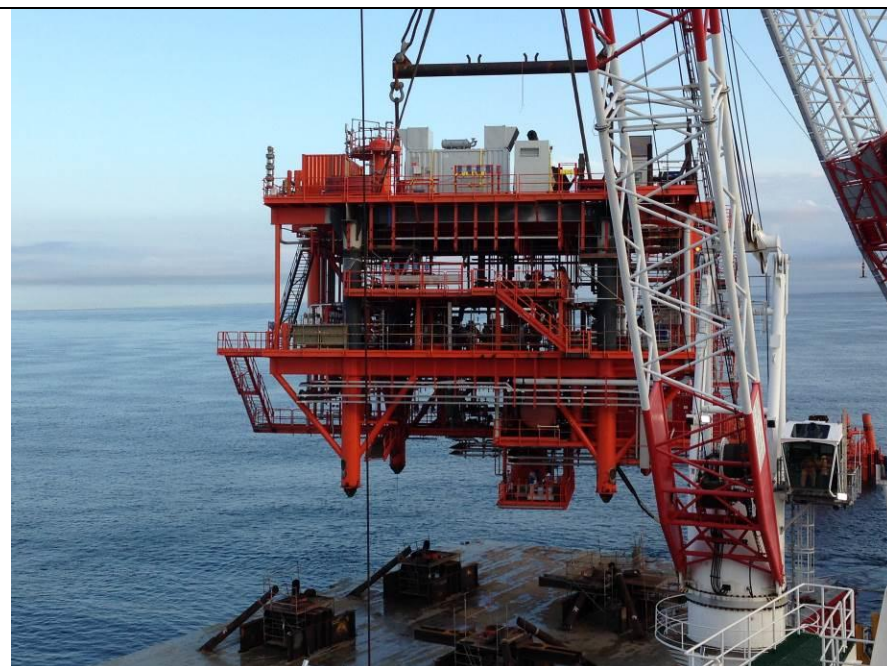
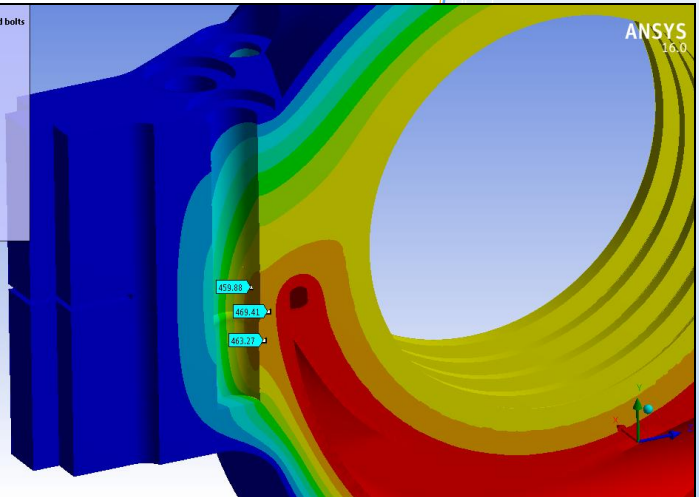
Customer:
E. & M. Service S.p.A.

F.E.M. THERMAL ANALYSIS OF INTERNAL CYLINDER OF 10 MW STEAM TURBINE

Customer: IPS

B: Steady-State Thermal-Cold bolts
Temperature
Type: Temperature
Unit: °C
Time: 1
05/05/2015 11:47

497.73 Max
475.75
453.77
431.79
409.81
387.83
365.85
343.87
321.89
299.92 Min



WHP4 PLATFORM (Congo)

Customer: Eni Congo

**COLLABORATION ON THE
DESIGN OF THE ARTIFICIAL
POLYCENTRIC TUNNEL OF
SOMAGLIA**

**High Speed Raiways
Milan-Bologna**

Customer: Snamprogetti S.p.A.



**CONVEYOR, GALLERY BENT FOR
A SIERRA GORDA MINE PLANT
IN CHILE**

Customer: Tenova S.p.A.

JACKET DESIGN

Awa Palouku (Congo)

Customer: Saipem Energy Services
S.p.A.





**DESIGN FOR GYPSUM SILOS IN REINFORCED
CONCRETE AND METAL BUILDING FGD IN
HIGH-RISK SEISMIC TERRITORY**

(BOCAMINA II – CHILE)

Customer: Tecnimont S.p.A.

**TEST ASSISTANCE OF
SEVERAL SUBWAYS
High Speed Railways
Milan-Bologna**

Customer: Snamprogetti S.p.A.



**DESIGN OF STEEL OFF-SHORE
MODULES FOR THE
REGASIFICATION TERMINAL
OLT – FSRU**

(LIVORNO - ITALY)

Customer: Saipem S.p.A.

**RAILWAY BRIDGE ON
VILLORESI ARC STEEL
STRUCTURE**

Customer: Esedra Milano

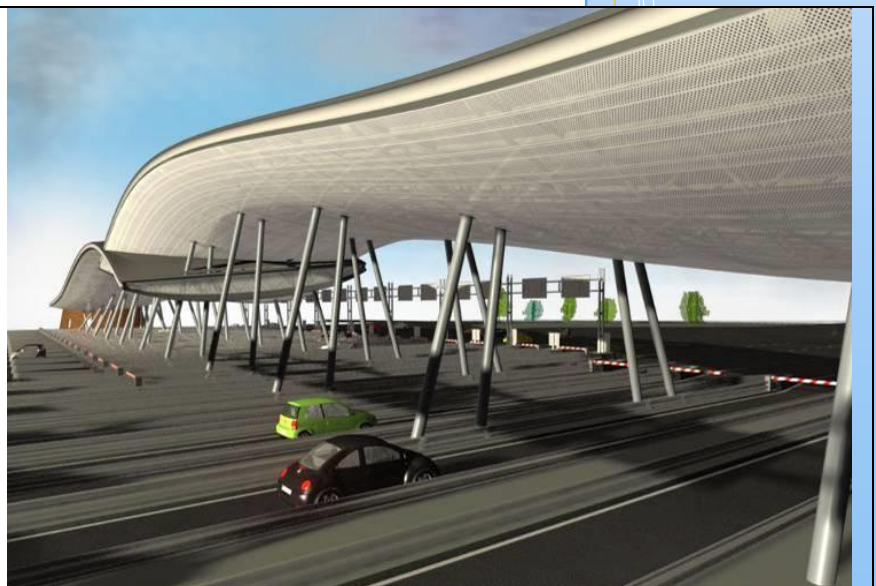


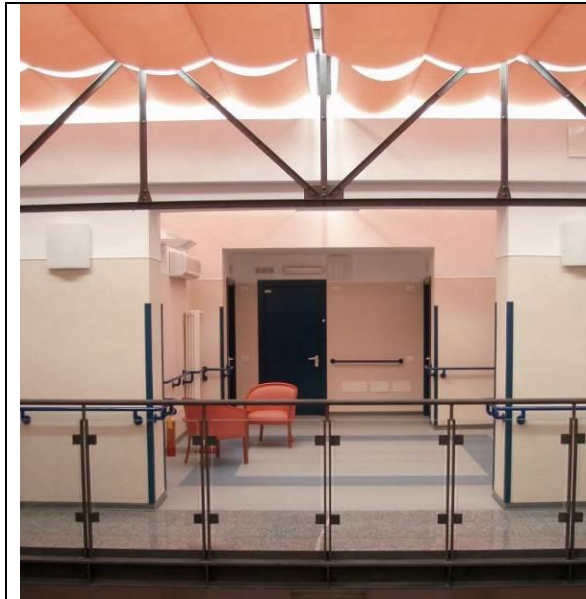
**JACKET DESIGN
BARAKA (TUNISIA)**

Customer: Saipem S.p.A.

**CANTILEVER ROOF FOR
TOLLGATE OF VENTIMIGLIA**

Customer: Esedra Milano





DESIGN AND SAFETY COORDINATION FOR WORKS OF RESTORATION OF BAROZZI HALL, INCLUDING THE ROOF FRESCHES.

"Casa Famiglia"

Customer: Institute for the Blind in Milan

DESIGN AND SUPERVISION OF WORK OF REINFORCED CONCRETE GYMNASIUM WITH STEEL STRUCTURE ROOF (15.000 M³)

Customer: Municipality of Mozzanica (Bergamo)



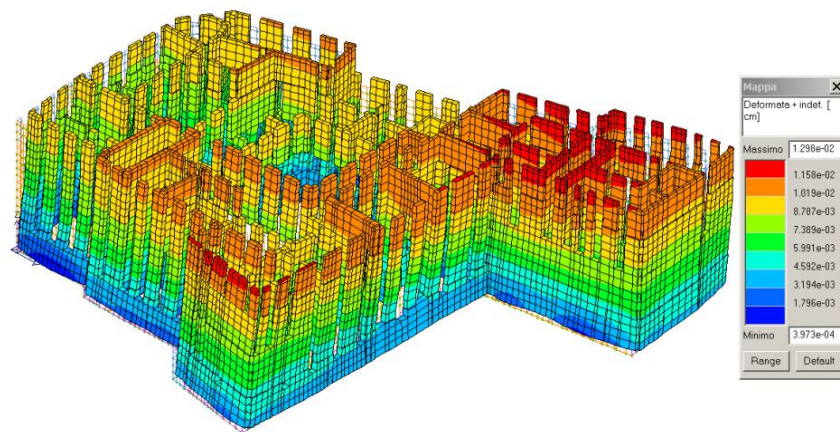
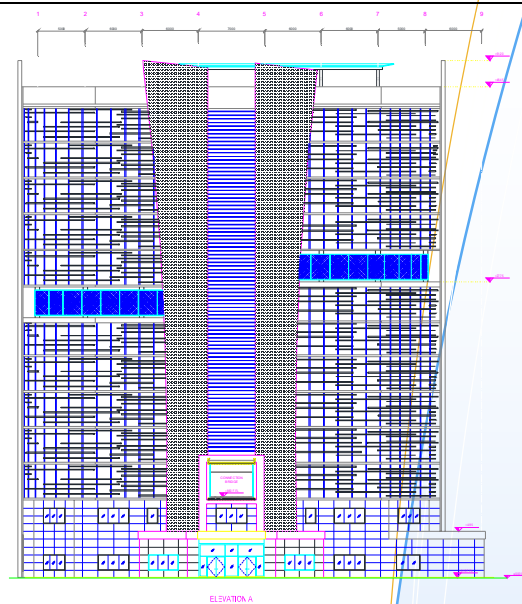
**DESIGN OF A NEW PRODUCTIVE STRUCTURE
1° MAGGIO STREET
POZZAGLIO (CREMONA).
STRUCTURES-PLANTS AND FIRE PROTECTION DESIGN**

Customer: PERI S.p.A.



**DESIGN OF OFFICE BUILDINGS
ABUJA (NIGERIA) FOR SAIPEM
S.P.A.**

Customer: ARKETIPO



**SEISMIC VULNERABILITY
ANALYSIS OF HISTORIC
BUILDINGS IN MILAN**

Customer: Beni Stabili S.p.A.

**DESIGN AND
SUPERVISION OF WORK
OF CONCRETE
DIAPHRAGM (PERIMETER
270 M), POST-
TENSIONING
ANCHORAGES AND JET-
GROUTING (AREA 2.770
M2) – EXCAVATION
DEPTH 5,5 M IN SARNICO
(BG) – ISEO LAKE.**

Customer: IMMOBILIARE
ERMINIA



**DETAILED DESIGN OF 3
STEEL STRUCTURE
MODULES (EPC 2-3-4)
KASHAGAN FIELD -
EXPERIMENTAL
PROGRAM CLUSTER -
KAZAKSTAN**

Customer: SAIPEM S.p.A.



**DETAILED DESIGN OF VARIOUS STEEL
STRUCTURE MODULES (PAU AND PAR) -
SURINAME**

Customer: SAIPEM S.p.A.

ORGANIZATION

Our organization allows us to follow simultaneously more activities.

DCRPROGETTI has been provided with the Quality Management System certified on the basis of UNI EN ISO 9001:2008 from 2004

POTENTIALITIES

Our team, including internal and external resources, can develop 5000-6000 hours/month.

- Project managers of structural field:
Eng. R. De Col, Eng. R. Donadoni, Eng. A. Villa, Eng. D. Zucchetti, Eng. F. Songini
Ing. A. Teodori, Ing. A. Morbio, Ing. A. Rosti
- Project managers of Offshore structural field:
Eng. F. Songini
- Project manager of mechanical plants field:
Eng. R. De Col
- Project manager of architectural, urban and restoration field:
Arch. M. Di Bridiga
- Project managers of safety field:
Ing. R. Donadoni, Arch. M. Di Brigida, Ing. A. Teodori.
- Project managers of fire protection field:
Eng. R. De Col, Ach. M. Di Brigida

Our work group is made up of the following experts:

- engineers, civil and structural planners;
- drawers, TEKLA, AutoCAD, Microstation, Framework, ArchiCad and photographic rendering expertise;
- Construction site surveyors;
- architect;
- air conditioning and electrical systems designer;
- quality system management.

SOFTWARE

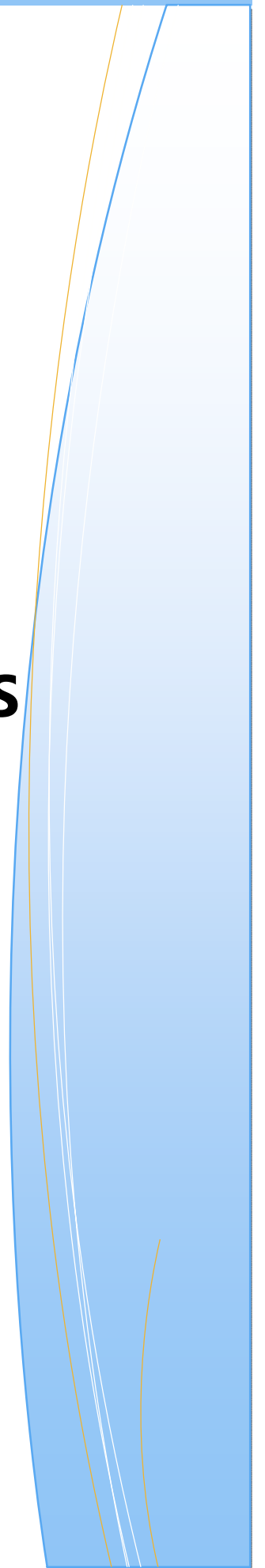
The software packages, used for the development of projects in various engineering fields, are shown in the following:

<u>Structural calculation:</u>	SAP2000	Software package including code check for static and dynamic, linear or non-linear analysis with code AISC, ACI, EC
	SACS	Software package including code check for off-shore analysis.
	Midas-GEN	Software package including code check for static and dynamic, linear or non-linear analysis
	GT Strudl (Georgia Tech. University - USA)	Software package including code check for static and dynamic, linear or non-linear analysis with code BS, AISC, ACI, EC
	STAAD-PRO Bentley – USA	Software package including code check for static and dynamic, linear or non-linear analysis with code BS, AISC, ACI, EC3, AS, NZ
	PRO-SAP – 2SI	Software package including code check for static and dynamic, linear or non-linear analysis
	Xfinest (Ce.A.S. Italy)	Software package including code check for static and dynamic.
	ANSYS	Software package including code check for static and dynamic, linear or non-linear analysis
	SOLIDworks	Software package and 3D graphic for modelling for mechanic elements and linear and non-linear analysis.
	LIMCON	Software package for steel structural connections checks
	MAT3D	Software package for reinforced concrete foundations design with EUROCODE, AUSTRALIAN, CANADIAN, INDIAN and IBC, ACI code.
<u>Rendering, drawing and animation:</u>	TEKLA structures	Software package dedicated to the three-dimensional steel structural design
	Microstation J e v.8	Software package dedicated to the two-three-dimensional steel structural design
	AUTOCAD	Software package dedicated to the two-three-dimensional steel structural design
	AllPlan 16	Software package dedicated to the three-dimensional design with the simulation of highly tactile effect through the creation of photographic rendering and animation simulations
	Frameworks Plus	Software package of the three-dimensional modeling compatible with PDS

	Tecnometal (Steel&Graphics – Italy)	Software package application for steel structural design with Autocad.
--	-------------------------------------	--

<u>Bill of Material (BOM).</u>	Primus 3000 (ACCA – Italy)	Software package for BOM
	STR Smart Office	Software package for BOM before and during construction
<u>Energy performance of buildings</u>	Edilclima EC 700	Software package for the calculation of energy performance of buildings
	Edilclima EC 740	Software package for design of hydrant networks, sprinklers and fire hoses
	Edilclima EC 733	Software package for the scaling of chimney stacks
	Edilclima EC 741	Software package for gas network design
	TERMOLOG Logical Soft	Software package for the calculation of legge 10, Energetic Certification and heating systems

PERSONAL PROFILES



<u>Name:</u>	Riccardo DE COL
<u>Date and place of birth:</u>	22nd April 1943 - Milan
<u>Nationality:</u>	Italian
<u>Educational Qualification:</u>	Degree in Civil Engineering with specialization in structures, at Politecnico di Milano , December 1971
<u>Different activities:</u>	
<u>Politecnico di Milano</u>	<p>Assistant of Prof. Leo FINIZI: implementation of practicing in the field of "Scienza delle Costruzioni" course for structural engineers 1972-1978</p> <p>Assistant of Prof. R. ZANDONINI: implementation of practicing in the field of "strutture in acciaio" course for structural engineers 1979-1988.</p> <p>Collaboration to "Strutture metalliche I and II " course of Prof. Ballo and Bernuzzi from 2004</p> <p>Assistant of Prof. A. CAROTTI: practising academic year 2008/2009 Structures for architect students</p>
<u>Spoken languages:</u>	English, French
<u>Membership to professional associations:</u>	<p>ATE: Associazione Tecnologi dell'Edilizia (Assistant) CTA: Collegio dei Tecnici dell'Acciaio (Counselor) AICAP: Associazione Italiana Cemento Armato e Precompresso CTE: Collegio dei Tecnici Edilizia Prefabbricata</p> <p>FIB (Federation International du Beton) IABSE: International Association for Bridge and Structural Engineering AISC: American Institute for Steel</p> <p>ATI: Associazione Termotecnica Italiana ANTA :Associazione Nazionale Tecnici Aeraulici (Vice president) AICARR: Associazione Italiana Condizionamento Aria</p> <p>Assistant of the subcommittee SC6 of Comitato Termotecnica Italiano: heating systems</p>
<u>Occupation:</u>	<p>Senior Civil Engineer, in charge of calculation, project e work management for civil, industrial and road works and plants.</p> <p>The main activity is currently the one of designer and project coordinator, with particular emphasis on the specific aspects of calculation and supervision of construction.</p> <p>The activity of general test and inspection of civil and mechanic works is done together with it. Structures for industrial plants, electrostatic filters, structures for chemical and petrochemical plants, tanks ect...</p>

The undersigned had the following enrollments:

Registration in the Regional Register of testers of Lombardy (at no. 326) for following disciplines:

- bridges and complex structures
- structures in reinforced concrete
- technological systems
- aqueducts
- sewages and other hygienic works

Registered in the Register of the Engineers of the Province of Milan at no. 10132

Registered in the Register of the qualified professionals in accordance with DPR 447/91 e dell'art.14 – L 46/90 per le categorie 1,2,3,5

Registered in the Register of qualified professionals in accordance with DM 25/3/85 art.6 (legge 818) al n. 20286

Energetic Certifier no. 1295 Lombardy Region

Participation in 2 advisory groups of Subcommittees 1 and 2 of CTI for the drafting of the plants certification Guide Lines

<u>Name:</u>	Raffaello DONADONI
<u>Date and place of birth :</u>	19 th June 1963 – Bergamo
<u>Nationality:</u>	Italian
<u>Education qualification:</u>	Degree in Civil Engineering with specialization in structures, at Politecnico di Milano, December 1991
<u>Different activities:</u>	<p>Certificate of participation in the course for safety in temporary and mobile construction sites (D.Lgs. 494/96), and following various refresher courses to maintain the qualification.</p> <p>Registered in the list of qualified consultants (Law n. 818) regarding Fire Prevention at n. BG01874I00332 and following various refresher courses to maintain the qualification.</p> <p>KlimaHaus Junior Expert Certificate obtained with participation in the Basic and Advanced Course KlimaHaus 2009 in Bergamo: BUILD - Course in executive design and construction management, design laboratory and visit to construction sites of energy efficient buildings. - Duration 88 hours KlimaHaus course on energy production, distribution and regulation in low energy buildings. Other courses regarding energy efficiency building organized by KlimaHaus.</p>
<u>Membership to professional associations</u>	S.I.G. – Società Italiana Gallerie from 1999 to 2018 with the participation in various conferences with visits to construction sites
<u>Spoken languages :</u>	English
<u>Professional Profile:</u>	<p>Registered in the Order of Engineers of the Province of Bergamo at no. 1874 from 9 September 1991</p> <p>Civil engineers, with assignment of the calculation and the design of civil and industrial structures in steel, normal and prestressed reinforced concrete, wood and masonry, of the estimates preparation, of the technical supervision and the coordination of activities connected to the implementation of civil and industrial works.</p> <p>Knowledge of different calculation codes for structures in plain concrete and iron, of which: Eurocode, A.C.I., A.I.S.C., B.S., DNV, As-NZ, ASCE, API Norwegian and French codes.</p>

Structural engineering sector

The main activity is the structural designer with particular regard to the problems concerning stress analysis, static reinforcement of masonry and reinforced concrete structures, steel structures and in the supervision of construction.

There are many work experiences as an external designer; experiences gained in and on behalf of primary importance engineering companies (SNAMPROGETTI, SAIPEM, S.A.S.P., A.B.B. - SAE SADELMI and TECNIMONT), in which the activity of purely structural design was required together a coordination activity for the collection of all the information and plant and mechanical requirements necessary to proceed to a correct structural analysis

Civil design sector

In addition to what is shown, some minor interventions should be mentioned for what concerns the quantity of work, extremely demanding; it is about interventions in the purely civil field composed of planning, site supervision and assistance of general test of small houses, industrial and artisan warehouse and restoration plans.

Name: Alberto VILLA

Date and place of birth : 17th July 1974 - Cernusco sul Naviglio (MI)

Nationality: Italian

Education qualification: Degree in Civil Engineering with specialization in structures, at Politecnico di Milano, December 1998

Politecnico di Milano Degree thesis on "Microstructural models for the study of mechanical behavior of natural and artificial tessuti fibrosi"

Spoken languages : English

Professional Profile: Structural engineer, in charge of calculation and design of civil and industrial structures in steel, reinforced concrete, prestressed reinforced concrete, wood and masonry. Preparation of estimates and technical supervision. Knowledge of different calculation codes for structures like A.C.I., A.I.S.C., B.S., EuroCodes and seismic code.

The main task is the one of coordinator and structural designer with special emphasis on the problems concerning stress analysis, design of structures in reinforced concrete, prestressed reinforced concrete and steel, static reinforcement of structures in masonry and reinforced concrete. Especially foundation structures and works in dynamic sector (spectral analyses and time-history) and seismic sector have been designed.

To point out many work experiences gained in primary importance engineering companies (SNAMPROGETTI, CESI-ISMES) as external designer.

Name: Michele DI BRIGIDA

Date and place of birth 24th December 1966 - S. Salvatore Telesino (BN)

Nationality: Italian

Education qualification: Degree in Architecture, at Università degli Studi di Napoli "Federico II", 1998

Università degli Studi di Napoli "Federico II" Degree thesis on "International contest for a multifunctional pavilion for Mies van De Rohe foundation in Barcelona"

Spoken languages : English

Professional Profile: Design architect of public and private building, planning and architectural design, restoration.

Architect in charge of coordination, project, and work management for civil and industrial buildings, city planning.

The main task is currently the one of coordinator of commessa, particular emphasis on the specific aspects of the architectural composition, city planning, work management.

To point out intense activity in the sector of fire protection in civil and industrial field.

Certificate of attendance at the course for safety in temporary and mobile construction sites (D.Lgs. 494/96) n. NA 3342, organized by CPT of Milan Lodi Monza and Brianza.

In recent years competences in the field of energy saving related to the building part have been developed.

Architectural composition:

To point out experiences gained as designer and coordinator of various roles concerning from scratch interventions, recovery and transformation of existing buildings in the following fields: residential, both public and private, scholastic, sports, commercial, industrial.

Name: **Francesco SONGINI**

Date and place of birth : 9th August 1977 - Sondrio (SO)

Nationality: Italian

Education qualification: Degree in Civil Engineering with specialization in structures, at Politecnico di Milano, April 2005

Degree thesis: "Underground tunnels in earthquake zone, comparison between numeral and analytic solutions".

Registered in the Register of the Engineers of the Province of Sondrio at no. 688 from 11/4/2006

Spoken languages : German, English

Professional Profile: Structural engineer, in charge of calculation and design of civil and industrial structures in steel, reinforced concrete, prestressed reinforced concrete, wood and masonry. Preparation of estimates and technical supervision.
Knowledge of different calculation codes for structures like A.C.I., A.I.S.C., B.S., EuroCodes and seismic code.

The main task is the one of coordinator and structural designer with special emphasis on the problems concerning stress analysis, design of structures in reinforced concrete, prestressed reinforced concrete and steel, static reinforcement of structures in masonry and reinforced concrete.

<u>Name:</u>	Daniela ZUCCHETTI
<u>Date and place of birth :</u>	3rd July 1981 - Milan (MI)
<u>Nationality:</u>	Italian
<u>Education qualification:</u>	Degree in Civil Engineering with specialization in structures, at Politecnico di Milano, 2006 Registered in the Register of the Engineers of the Province of Milan at no. A26802
<u>Study experiences abroad:</u>	Erasmus program in Universidad Politecnica de Madrid, academic year 2002-2003
<u>Spoken languages :</u>	English, Spanish
<u>Professional Profile:</u>	<p>Structural engineer, in charge of calculation and design of civil and industrial structures in steel, reinforced concrete, prestressed reinforced concrete, wood and masonry. Preparation of estimates and technical supervision. Knowledge of different calculation codes for structures like A.C.I., A.I.S.C., B.S., EuroCodes and seismic code.</p> <p>The main task is the one of coordinator and structural designer with special emphasis on the problems concerning stress analysis, design of structures in reinforced concrete, prestressed reinforced concrete and steel, static reinforcement of structures in masonry and reinforced concrete. Especially foundation structures and works in dynamic sector (spectral analyses and time-history) and seismic sector have been designed.</p>

PAPERS:

Over the years, structures have been designed where a particular study in the structural field was necessary, from which papers were extrapolated for the Costruzioni Metalliche Magazine and exhibited in the various conferences organized by the College of Steel Technicians.

Industrial plants for bulk materials handling

DCRPROGETTI presentation at the XXVIII Congress on metal structures organized by C.T.A. held in Francavilla al Mare (Pescara) in 2022.

The aim of this document is to illustrate the peculiarities that characterize a particular sector within industrial plants, that is the one that deals with the handling of bulk materials. A first part will be used to describe the various equipment that make up the plant, such as the different types of conveyors, belts, driving and tail heads, counterweights, hoppers and all the other fundamental elements for the loading, handling, unloading and storage of materials. It then continues with the identification of typical loads, "special" loads and the various stresses induced by handling. Finally, structural elements and types that are best suited to the service of the aforementioned equipment are identified, such as bridge beams, galleries, bents, loading towers, unloading towers or distribution towers with a focus on the main structural problems to be taken into account in the design.



Modular solutions in petrochemical facilities structural design from construction to operating conditions

DCRPROGETTI presentation at the XXVI Congress on metal structures organized by C.T.A. held in Venice in 2017.

The structural modularization is often necessary for the construction of industrial plants. This technique allows to build in difficult sites with sustainable cost. A untraditional design approach is applied to this structures to ensure the best performance in all the construction phases and in operating conditions. The need to guarantee the integrity of the equipment during the modules movements makes the transportation the most critical design condition. In this article some design experience are described focalizing the attention on the following phases: load-out, sea-transportation and load-in. The analysis techniques and the structural solution are here explained in order to give a description of the used design approaches.



Design of a industrial steel structure in the vibration limit state.

DCRPROGETTI presentation at the XXV Congress on metal structures organized by C.T.A. held in Salerno in 2015.

The steel structures in the industrial field often support rotary or reciprocal vibrating machines. These machines produce vibrations that spread throughout the structure up to the foundation. National and international codes impose limitations on vibrations, both for the proper functioning of the machines and for the protection of the health of the operators. In the case under examination, the industrial structure, partly in reinforced concrete and partly in steel, supports many vibrating machines at various elevations (fans, pumps, vibrating beds, mills) with very different vibration frequencies. Only with the use of a three-dimensional finite elements model and applying load time histories was it possible to grasp the structural behavior with respect to vibrations and therefore to proceed to an accurate design at the serviceability limit state.

Problems in industrial buildings in high-seismic zones – The power plants

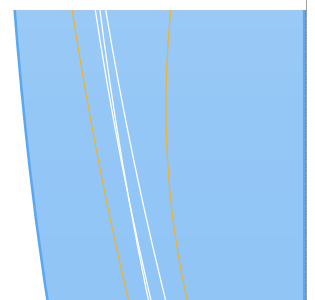
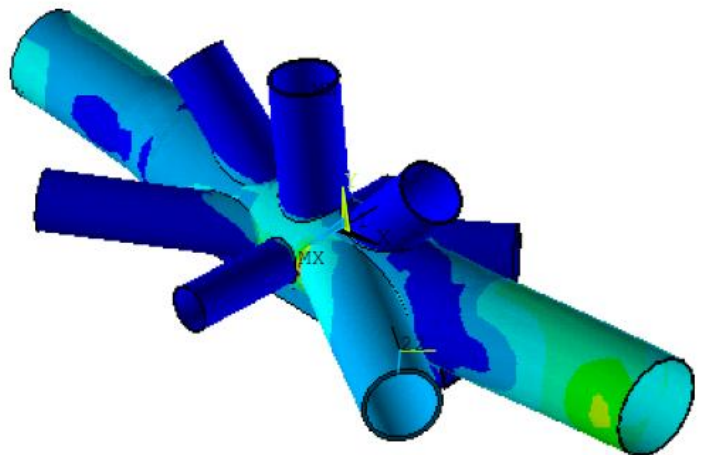
DCRPROGETTI presentation at the XXIII Congress on metal structures organized by C.T.A. held in Ischia (Naples) in 2011.

The construction of buildings in power plant in highly seismic zone involves the resolution of important engineering problems. This paper illustrates a building for the desulphurization and the turbine hall analyzed by spectral analysis in accordance with Chilean code and its peculiarities. The most important details for each building are presented.

Evaluation of the SCF for Tubular Connection with Finite Element method

DCRPROGETTI presentation at the XXII Congress on metal structures organized by C.T.A. held in Padua in 2009.

An actual application using finite elements for Stress Concentration Factor (SCF) assessment in connections with fatigue problems of an oil drilling platform off Libya is illustrated. The procedure follows what is suggested by the fatigue international standards code.



SOFTWARE

The software packages, used for the development of projects in various engineering fields, are shown in the following:

<u>Structural calculation:</u>	SAP2000	Software package including code check for static and dynamic, linear or non-linear analysis with code AISC, ACI, EC
	SACS	Software package including code check for off-shore analysis.
	Midas-GEN	Software package including code check for static and dynamic, linear or non-linear analysis
	GT Strudl (Georgia Tech. University - USA)	Software package including code check for static and dynamic, linear or non-linear analysis with code BS, AISC, ACI, EC
	STAAD-PRO Bentley – USA	Software package including code check for static and dynamic, linear or non-linear analysis with code BS, AISC, ACI, EC3, AS, NZ
	PRO-SAP – 2SI	Software package including code check for static and dynamic, linear or non-linear analysis
	Xfinest (Ce.A.S. Italy)	Software package including code check for static and dynamic.
	ANSYS	Software package including code check for static and dynamic, linear or non-linear analysis
	SOLIDworks	Software package and 3D graphic for modelling for mechanic elements and linear and non-linear analysis.
	LIMCON	Software package for steel structural connections checks
	MAT3D	Software package for reinforced concrete foundations design with EUROCODE, AUSTRALIAN, CANADIAN, INDIAN and IBC, ACI code.
<u>Rendering, drawing and animation:</u>	TEKLA structures	Software package dedicated to the three-dimensional steel structural design
	Microstation J e v.8	Software package dedicated to the two-three-dimensional steel structural design
	AUTOCAD	Software package dedicated to the two-three-dimensional steel structural design
	AllPlan 16	Software package dedicated to the three-dimensional design with the simulation of highly tactile effect through the creation of photographic rendering and animation simulations
	Frameworks Plus	Software package of the three-dimensional modeling compatible with PDS

	Tecnometal (Steel&Graphics – Italy)	Software package application for steel structural design with Autocad.
--	-------------------------------------	--

<u>Bill of Material (BOM).</u>	Primus 3000 (ACCA – Italy)	Software package for BOM
	STR Smart Office	Software package for BOM before and during construction
<u>Energy performance of buildings</u>	Edilclima EC 700	Software package for the calculation of energy performance of buildings
	Edilclima EC 740	Software package for design of hydrant networks, sprinklers and fire hoses
	Edilclima EC 733	Software package for the scaling of chimney stacks
	Edilclima EC 741	Software package for gas network design
	TERMOLOG Logical Soft	Software package for the calculation of legge 10, Energetic Certification and heating systems

MAIN PROJECT

YEAR	CUSTOMER	DESCRIPTION
2022	SAIPEM	FEED drawing and 3D Tekla modelling for the jacket of two platforms - NFPS COMPRESSION PROJECT FEED – Persian Gulf - QATARGAS - QATAR
2022	SAIPEM	Models FEM checks of a piperack and a FLNG module for ZLNG preliminary project at Sipitang, Sabah (Petronas – Malaysia) for installation and operating phases (transport, lifting, in-service and blast).
2022	SAIPEM	Models FEM checks of two FPSO piperacks of Gato do Mato Project (Brazil) for installation and operating phases (transport, lifting, in-service and blast).
2022	WOOD - FOSTER WHEELER	Design of pile foundations and steel connections of structures of a chemical plant of "Solvay Group" located in Tavaux (France).
2022	SCS INGEGNERIA	Validation of the project for solar tracker steel frames - ENI
2022	SCS INGEGNERIA	Validation of the project for steel frames for photovoltaic panels - Porto Marghera
2022	TENOVA	Conceptual design of a CDRI plant - Salzgitter - Germany
2022	PROGRA s.r.l.	In-service analysis of the top side of the Basil Platform to the installation of photovoltaic panels - ENI – Adriatic Sea.
2022	SAIPEM	Detailed Design of the deck of QUILUMA PLATFORM - ENI - Angola. In-service analysis - 2400 tons.
2022	WOOD - FOSTER WHEELER	Design and drawing of reinforced concrete walls (height 24 m) and steel structures wind walls (height 40 m) for a complex of a Copper Concentration Plant-3 of a new mining concentrator - Almalyk, Republic of Uzbekistan.
2022 on going	STED - ENGITEC	Design of modularized steel structures for a waste battery disposal and treatment plant located in a very high seismic area - Indonesia Manyar Maju (MMR) Project. In-service and lifting analysis.
2022	SAIPEM	Design, drawing and 3D Tekla modeling of steel support for piping and cable trays of jetty for BONNY LNG TRAIN 7 PROJECT - Nigeria.
2022	E-COSTRUZIONI - Milano	Structural design and supervision of construction site of a reinforced concrete residential four-story building – Ponteranica (BG) for a energy efficiency and seismic behaviour improvement.
2022	TESTA PIERLUIGI	Structural and architectural design and supervision of construction site of a villa – Cene (BG) for a energy efficiency and seismic behaviour improvement. - Safety Coordination.
2022	MULTIMANUTENZIONE	Detailed design, drawing of a reinforced concrete structures of two university students residential building - Fondazione Collegio delle Università Milanesi – Via Ovada - Milano.
2021-2022	ARCADIS	Design, 3D modelling Revit and draw of a production building, an equipment building, a logistics warehouse and a self-supporting warehouse of the new Araymond headquarters in Vercelli, built with precast reinforced concrete structures, wood roof and pile foundations.
2021-2022	FLSMIDTH MILANO	Revamping and checks of a existing steel structure (Sylvanite Building) in the industrial plant of "Arab Potash Company LTD" located in Jordan.
2021-2022	WOOD - FOSTER WHEELER	Design, 3D modelling Tekla and draw of a steel structure with micropiles foundations of petrochemical complex of INFINEUM and LYONDELLBASELL FRANCE for IDEAL 3.1 PROJECT planned for the addition of two centrifuges package. - Berre L'Etang - France.
2021-2022	CTP TEAM S.R.L.	Detailed design of a steel structure for heat-exchange support, of revampig of two new bag filters, including reinforcements of the reinforced concrete support structures and ducts or the cement factory - Bishah - Saudi Arabia. In-service and lifting analysis.
2021-2022	ANTONIO ALDINI S.R.L.	Design and supervision of construction site (Antonio Aldini street, Milano). - Safety Coordination.
2021-2022	STED - SIIRTEC NIGI	Designs, 3D modelling Tekla and draw of steel structures and service platforms for Shale Oil ENEFIT Condensate Unit 280-2 - Narva - Estonia.
2021	TECNIMONT	FEED design of steel and reinforced concrete structures with relevant foundations for Refinery Fourth Expansion Project – Jordan Petroleum Refinery Co. - Zarqa – Jordan.
2021-2022	BEDESCHI	Design of steel structures and steel conveyor belt for the revamping and improvement of middle distillates quality of ASORC Refinery - Assiut - Egypt.
2021-2022	BEDESCHI	Design of steel structures and steel conveyor belt for AEONorthern Star Taymir Dolgano-Nenets - Russian Federation.

2021	BEDESCHI	Design of a new crusher group (steel structures, conveyor belt, hoppers) - Italcementi Matera - Italy
2021	BEDESCHI	Check of actual configuration and solution for structural reinforcement proposal - Voest Alpine storage building - Portland (Texas).
2021	BEDESCHI	Reactions of steel conveyor belt - Emco Plant - Shakhtersk Coal Terminal (port and quarry area).
2021	SCS INGEGNERIA	Geotechnical stability checks of the access road embankment of the wind farm in CASTELMAURO and Roccavivara (Campobasso) - Italy - Enel Green Power - 29.4 MW.
2021	SCS INGEGNERIA	Geotechnical stability checks of the embankment in correspondence with the foundations of the wind turbines in CASTELGRANDE, Muro Lucano, San Fele, Rapone (Potenza) - Italy - 57.6 MW.
2021	DANIELI S.p.A	FEED structural design of a Hy-Temp tower, high 100 m. about, for a new meltshop of EZZ STEEL COMPANY in Ain Sukhna - Suez Gulf - Egypt.
2021	SCS INGEGNERIA	Structural detailed design and drawing of the foundation of a permanent self-supporting anemometric tower 81.5 m high. - Fulgatore (Trapani) - Italy - Indamic.
2021	SIIRTEC NIGI	Skid foundations design of various sites located in Italy - "Package regeneration Glicole Project".
2021	DELTA ECOPOLIS	Design, drawing of a reinforced concrete structures of a residential building. Area "Ex-Nivea", Gerenzano (VA) - 21.000 mc.
2021	4 OTTO Soluzioni srl	Design, drawing and fire resistance check of a reinforced concrete structures of a residential building - Garbagnate Milanese (Milan)
2021	SIIRTEC NIGI	Checks of the design for modularized steel structures. - CCS-JV project - Mozambique LNG
2021	STUDIO ZAMPINI	Seismic analysis to check the vulnerability of existing reinforced concrete building with five floor, located in Ascoli Piceno - Italy - Construction data 1981
2020 on going	ARKETIPOPPOGETTI	Design and drawing and 3D modeling of reinforced concrete structure with relevant foundations with blast load of Oil Treatment Plant OIL&GAS of Berri - ARAMCO - SAUDI ARABIA - Substation BLDG, PIB, Control Room, Maintenance BLDG and Utilities BLDG.
2019 on going	SAIPEM	Design and drawing and 3D Tekla modeling of steel structure modules and reinforced concrete structure with relevant foundations for Refinery THAI OIL Clean Fuel project - Shiracha - Thailandia. Analysis of different phases of construction, sea transportation, load out, lifting and in-service condition
2021 on going	ACERO s.r.l.	Design, drawing and supervision of construction site of a reinforced concrete structures of three residential building - Via A.Ottolini, Origgio (VA)
2021 on going	BUILDING GHISALBA (BG)	Seismic analysis to check the vulnerability of existing reinforced concrete building with three floor, located in Ghisalba (Bergamo) - Italy.
2020	DEMONT	Detailed structural design, with operating, transportation and lifting phase analysis, of a waste heat boiler (WHB) with relevant service platforms - Uzbekistan.
2020	SCS INGEGNERIA	Structural detailed design and drawing of the foundation of a permanent self-supporting anemometric tower 81.5 m high. - Aquilonia (Avellino) - Italy - EDP Renewables.
2020	BEDESCHI	Support structures design (tridimensional truss beams, galleries, bents, fixed point towers, discharge/tail head structure) for a pipe conveyor about 650 m length - Mitchell - INDIANA - USA
2020	ERGOSUD	Seismic analysis to check the vulnerability of existing concrete buildings and steel structures with relevant piled foundations for Scandale Plant - CROTONE. Aircooler, heat recovery steam generator, electrical building, control building, canteen, guard house, storage building.
2020	Municipality of Lainate (MI)	Validation of the project for a nursery building in Val Seriana street. Amount of work 2 million euros
2020	SAIPEM	Design, drawing and Tekla 3D modeling of Platform D33 structure - LUKOIL - Russia - Baltic Sea.
2020-2021	ENIPROGETTI S.p.A.	Drawing and Tekla 3D modeling of the new flare to instal on platform ZATCHI ZAF1 Congo
2020-2021	ENIPROGETTI S.p.A.	FEED drawing and 3D Tekla modelling for a platforms AMOCA WHP2 located in the Gulf of Mexico - Mexico.
2020-2021	STED - ISG TECNIMONT	Detailed design of steel structure - Refrigeration Package - New European PDH Kallo Project - Borealis - Kallo - Belgium.
2020-2021	SAIPEM	Detailed drawing and 3D Tekla modelling for a platforms jacket located in the Dogger Bank Wind Farm - North Sea

2020 on going	SAIPEM	Drawing and 3D Tekla modeling of three jetty for BONNY LNG TRAIN 7 PROJECT - Nigeria.
2020	IMMOBILIARE MARINA S.r.l.	Design, drawing and supervision of construction site of a reinforced concrete structures of a residential building (Via Mirabello - PP5 - Area 7, Carugate (MI))
2020	GI.AN. ENGINEERING – BONO ENERGIA	Detailed design of two modularized steel structure skids with in-service, transportation and lifting analysis - Polyol Project – MOLGROUP – Refinery of Tiszaújváros – Hungary.
2019-2020	ACERO s.r.l.	Design, drawing and supervision of construction site of a reinforced concrete structures of two residential buildings - Viale della Resistenza, Origgio (VA)
2019-2020	ARKETIPOPGETTI	Structural design and drawing of eight reinforced concrete building for Refinery THAI OIL Clean Fuel project – Shiracha – Thailandia. - SAIPEM
2019-2020	SAIPEM	Planning, check, design, drawing and 3D Tekla modelling for seven platforms, jacket and deck, located in the Persian Gulf - QATARGAS - QATAR
2019-2020	MANGIONE - CAPPELLO	Architectural and structural design and construction supervision of civil works for the union of two housing units in Corso di Porta Romana in Milan. Coordinator for safety and health, during designing and execution phases (Decree Law 494/96).
2019-2020	ARCADIS	Definitive and executive structural design of a steel and reinforced concrete two-store building for the new thermal power plant for Open Zone Revamping Project - ZAMBON - Bresso (MI), - Supervision assistance of construction site.
2019	DESMET BALLESTRA S.p.A.	Design of a walkway for acces the roof of a storage tank of concentrated phosphoric acid – FLSmidth – Israele.
2019	ENIPROGETTI S.p.A.	Design of a pump reinforced concrete basin with shelter, walkway and other support - ORF Debottlenecking Project PEMEX – Messico
2019	SAIPEM	Detailed drawing and 3D Tekla modelling for the revamping of three platforms, jacket and deck - Barzan Project – Qatar - Persian Gulf.
2019	ISS INTERNATIONAL - 2PIGRECOE	Structural design of a concrete building in seismic zone and subjected to a blast load (1.5 psi) with the relevant foundation slab – NEW NAPHTHA COMPLEX MOTOR OIL (HELLAS) – CORINTH REFINERIES S.A
2019	SAIPEM XSIGHT S.p.A.	Preliminary design of the civil structures, with basic design of pile foundations, of Waste to Fuel Plant, conversion of the organic fraction of solid waste into bio-oil by means thermo-liquefaction technology - ENI SYNDIAL - Marghera (VE) and Manfredonia (FG)
2019	WOOD - FOSTER WHEELER	Design of a reinforced concrete sump for sulfur processing. Antwerp EPC2 Project - Exxon Mobil - Anversa (Belgium).
2019	WOOD - FOSTER WHEELER	Structural design of a wind breaker fence about 25 m high for Antwerp Exxon Refinery – Belgium.
2019	BOLDROCCHI	Design of steel stack with internal counter-barrel with 3050 mm diameter and 84 meters height with relevant support structures - Italcementi Plant - Isola delle Femmine (Palermo).
2019	SAIPEM	Design of steel structure pipe rack with fire resistance analysis - Takoradi-Tema Interconnection project - Ghana
2019	ARKETIPOPGETTI	Basic design of two reinforced concrete building (Administration BLDG and Control Room) and steel structures Warehouse with relevant pile foundations for Ca Voi Xanh Project -ExxonMobil - Vietnam - XSIGHT
2018-2019	WOOD - FOSTER WHEELER	Activities of structural engineering, Tekla 3D modeling, MTO and drawing of steel structures for HELPE Aspropyrgos - Grecia
2018	WOOD - FOSTER WHEELER	Tekla 3D modeling, MTO and drawing of steel structures for MB307 Project GSK Marburg Germany
2018-19	ARCADIS	Definitive and executive structural design of the towers building and Open Circle - ZAMBON Open Zone development project in Bresso (MI)
2018	TERMOMECCANICA ECOLOGIA	Structural design of HRSG boiler – TME Takreer Abu Dhabi
2018/19	SAIPEM	Design and drawing of five reinforced concrete building for revamping Takoradi-Tema Interconnection project - Ghana
2018-2019	QUERCIA S.R.L.	Design, drawing and supervision of construction site of a reinforced concrete structures of a residential building (Viale della Resistenza lotto PP3/1, Origgio (VA))
2018-2022	4 8 SOLUZIONI	Structural design, planning and supervision of residential buildings and villas in Garbagnate Milanese (MI)
2018	ALSTOM POWER	Structural design of a steel tank with relevant anchor bolts
2018	METALVETRO	Richard Mille Engineering carved glass Structural checks
2018	TECON	In-Service analysis, 3D modeling and draw of Tolmount Offshore Platform – Great Britain

2018	TECON	Analisi in condizioni inservice di una Piattaforma nel Mar Mediterraneo – Kavala, Grecia
2018	WOOD - FOSTER WHEELER	Engineering activities and structural design for revamping of Gas Turbine reinforced concrete foundations in Sarlux Refinery in Sarroch, Sardinia
2018	Municipality of PONTE SAN PIETRO (BG)	Seismic analysis to check the vulnerability of existing Matteo Legler Stadium. A reinforced concrete structure with a height equal to 11 m and length 55 m with a cantilever roof with a span equal to 8 m. – Construction data 1950
2018	WOOD - FOSTER WHEELER	Attività di controllo ingegneria per il progetto PETROM CDB Raffineria Ploiesti - Romania
2018	TECON	Design of equipment foundations and Flare foundation – Takoradi-Tema Interconnection project - Ghana
2018	SOIL S.R.L.	Detailed drawing of MOF with sheet piles for marine facilities - SAIPEM-ANADARKO, Mozambique LNG - 5,99 MTPA - Mozambique.
2018	CEAS	Concrete building finite element modeling - La Spezia - Italy.
2018	Ex-convent Besozzo (VA)	Seismic vulnerability analysis of Building in Besozzo (VA).
2018	A2A - Milan	Traffic light tests
2018	MINISTRY OF CULTURAL HERITAGE AND ACTIVITIES AND TOURISM	Static structural testing of the consolidation and repair works of the Roman Tower of the Ex-Circus in Milan
2018	DEMONT	Engineering activities for structural design and structures' drawing of boilers located in the Refinery SASRED Saudi Arabia.
2018	Municipality of Spino d'Adda (CR)	Validation of the project for energy recovery and structural reinforced concrete of two school buildings. Amount of work 4 million euros
2017	SAIPEM	Inservice, Spectral fatigue, Pushover and Boat Impact Analyses of three offshore platforms located in the Arabian Gulf - SFNY 1130/1139, SFNY 1140/1149 e MRJN 740/749 - ARAMCO - Saudi Arabia
2017	RINA	Designs, 3D modeling and draw modularized steel structure with relevant foundation and reinforced concrete transformers basins of Power Plant in Porto de Sergipe (Brazil)
2017	ARKETIPO	Detail structural design of four reinforced concrete buildings – CEC Power Generation Plant - Congo - SAIPEM
2017	SAIPEM	Non-linear FEM analysis of a flanged connection of risers subject to high loads
2017	ARKETIPO	Detailed structural design of the "Extrusion Building" Petronas Rapid Project P27 - Malaysia
2017	RINA	Design, 3D modeling and draw of a skid for evaporators support to lay on the roof of ENEL Power Plan - Brindisi Sud
2017/18	BOHLER UDDEHOLM - Milan	Steel structure design for the support of 4 bridge cranes
2017	ARKETIPO	Structural design of steel structure MTB and reinforced concrete MCC buildings – RABIGH II Refining and Petrochemical Project - Saudi Arabia - SAIPEM
2017/18	WOOD - FOSTER WHEELER	Computing engineering activities and structural design for revamping of steel structure in Sarlux Refinery in Sarroch, Sardinia
2017	WOOD - FOSTER WHEELER	Pre-design of steel structures with relevant foundations Utilities & Offsite Units Project HAOR SOCAR Refinery in Baku, Azerbaijan
2017	PENSOTTI CALDAIE	Engineering activities for structural design and structures' drawing of HRSG boilers - TME Takreer Abu Dhabi
2017	SIIRTEC NIGI	Design of three steel structure modules for ADCO AL DABBIYA (UAE). Analysis of different phases of construction, transportation procedure, load out phases and in-service condition
2017	SIIRTEC NIGI	Road transportation analysis of ten steel structure modules for ARU for plant Jurassic production Facility (JPF) at Sabriya (Kwait).
2017	STED	Designs, 3D modelling and draw of pipe rack and steel structures for ARU for Plant Jurassic Production Facility (JPF) at Sabriya (Kwait) – SIIRTEC NIGI. Analysis of different phases of construction, lifting procedure, transportation procedure, load out phases and in-service condition.
2017	DGIMPIANTI	Designs, 3D modeling and draw of two steel structure modules for the LNG production and loading terminal in Port Vysotsk - STAGE III (Russia) – SIIRTECNIGI. Analysis of different phases of construction, lifting procedure, transportation procedure, load out phases and in-service condition.
2017	Municipality of PONTE SAN PIETRO (BG)	Design and construction supervision of maintenance structural civil works of the Matteo Legler Stadium to obtain the fire prevention certificate with repair of reinforced concrete structure. Coordinator for safety and health, during designing and execution phases (Decree Law 494/96).

2010-2017	ROTA	General, structural, architectural, plant engineering and safety design and construction supervision of two-family residential building. Static test - CENED class A4 Certificate - KlimaHaus GOLD Certificate. Province of Bergamo
2017	PELLEGATTA	Structural design and construction supervision of residential building renovation
2016	SAIPEM	Structural analysis for modifications required on the VLS90t Tower to allow safe installation of the Flexible Jumpers on EGINA project. – SAIPEM 3000 SHIP
2016	CST	Dynamical rotary turbine FEM analysis, low pressure pallets, outer and internal cylinder, blade cyclical modal analysis - 10MW
2016-17	GICO TECNICA SRL	Structural design of pipe rack, structures and shelter drawing development, tekla model - Petronas Rapid Polypropylene Plant Project P7 - Malaysia
2016	GRUPPO CENTRO NORD SPA	Preliminary, final and executive design of plant and foundations of a prefabrication factory plant in Saudi Arabia
2016	DEMONT	Design of structural fire steam generator Marghera
2016	BEDESCHI	Structural design of support structures. Tapes and towers for the project of the dry-bulk terminal handling system - Turkmenbashi International Seaport - lot5 – Turkmenistan
2016	VOLKSWAGEN LEASING GMBH	Design and advice for a residential building - Serra street - Milan
2016	TECNOMARE	3D tekla modeling of NPS monopode Barracuda, Gambari, Segana e Octopus
2016	C.S. IMPIANTI	Design of steel structures in transport and service phase for ADCO AL DABBIYA plant (United Arab Emirates)
2016	PROGER	Engineering activity for NENE platform development phase 2
2015/16	INGERSOLL RAND	Design review and calculations validation for transport and lifting of cruisers
2015	SAIPEM	structural design for the revamping of an off-shore rig in Turkmenistan
2015	SIIRTEC NIGI	engineering and drawing activity ZKMN project- Kazakhstan
2015/16	AMEC FOSTER WHEELER	design of support structure of coke drum-pemex
2015	TECNIMONT	analysis and revision feed for expansion of Abu Dhabi Gas Project
2015	SOGEMI	check and design of provisional structure supporting the wall enclosure of the former meat market area
2015	BENI STABILI IMMOBILIARE	technical activity for seismic vulnerability check of masonry and reinforced concrete buildings in Milan
2015	ALEX SISTEMI	structural design in service, lifting, seismic and blast conditions for steel cruisers
2015	AMEC FOSTER WHEELER	Structural analysis of steel modules and Foundation of Turbine GTG and compressor - EXXON MOBIL JURONG REFINERY SINGAPORE.
2014/15	AMEC FOSTER WHEELER	structural analysis of steel modules ENEL MOCHOVCE
2014/15	SAIPEM	Design and detailed drawings execution for granulate transport ducts - Fertilizer project Plant – Dangote - Nigeria
2014/15	SAIPEM	Design and draw of equipment reinforced concrete foundation (gas turbines, fans, vessels, pumps and basins) and steel structures foundations – Fertilizer project Plant – Dangote - Nigeria
2014	SAIPEM	preliminary structural design of structure for coal bunker - New Caledonia
2014	ALBA & C.	calculations revision loads at base skid seismic/wind and finite elements for lifting check
2014	B&G	structural nodes check activity
2014	SAIPEM	preliminary structural design of pipe racks, structures and foundations project AL-RATAWI-IRAQ
2014/18	SAIPEM	Design, 3D modeling and draw of steel structures with relevant foundations, equipment reinforced concrete foundation (gas turbines, fans, vessels, pumps and basins) for revamping of Oil Treatment Plant OIL&GAS of Khurais (ARAMCO - Arabia Saudita). Steel structures for racks and related foundations.
2015/17	ARKETIPO	structural design of reinforced concrete building, blast analysis included for revamping of petrol treatment plant OIL&GAS of Khurais (ARAMCO - Arabia Saudita).
2014/15	SAIPEM	structural check onboard survey included saipem tad
2014/16	GICO TECNICA SRL	Design, 3D modeling and draw of steel structures with relevant foundations, pipe racks, shelters - ARAMCO - Jazan refinery - Saudi Arabia
2014/16	SAIPEM	Detail design of steel structures and related foundations for the EP(D)M GP27-VERSALIS FERRARA plant in earthquake zone 3 in accordance with NTC2008 codes, structural fire resistance analyses included

2014	SAIPEM	Design of equipment foundations of EP(D)M GP27-VERSALIS FERRARA plant
2014	TECNOMARE	drawing of jacket and deck of Bianca and Luisella platforms
2014	SAIPEM	feed analysis for 3 modules Mabma Ing Complex Project
2014	SAIPEM	modeling with TEKLA and execution of AUTOCAD drawings of topside structures for CCP E WHPB sepat project
2014	ARCH. GONELLA	Verification and validation of the detailed project of a new road bridge on Serio River with cycle and pedestrian lane. ALBINO (BG) - Italy
2013	SAIPEM	global and detailed analysis, and detailed drawings for SLIDING-PLATFORM, A-FRAME, ADJUSTER TRUSS and LOWER TOWER - S7000 J-LAY TOWER project
2013	FERROVIE NORD MILANO	executive design of civil works concerning the structural reinforcement of the bridge in Cesano Maderno - Milan-Saronno Trenord section
2013	SIIRTEC NIGI	check and correction of planning elaborates (calculation reports, BOQ and drawings) concerning foundations and steel structures of the new gas treatment plant of GAZPROM INVEST LLC - KAZATCHIYA, RUSSIA.
2013/16	SAIPEM	structural analyses, calculation reports, 3D Tekla modeling and drawing of fundamental and secondary structures and equipment supports of three modules EPC KASHAGAN FIELD
2013	SAIPEM	conversion of upgrade S7000 JLAY TOWER models and adaptation in Ansys
2013	REDECAM GROUP SRL	design and drawing- new bag filters for the cement factory - SOUR EL GHOZANE - ALGERIA
2013/14	SAIPEM	structural design and executive drawing concerning foundations of compressors and tanks - SSAGS - NIGERIA
2013/14	SAIPEM	Design of pipe rack and steel structures with relevant foundations and compressors foundations for the petroleum GOSP plant Southern Swamp Associated Gas Solution in TUNU – Nigeria. Analysis of different phases of construction, lifting procedure, transportation procedure, load out phases and in-service condition.– 1500 tons of steel and 100 cubic metres of concrete
2013	ENI VERSALIS	Study for the structural maritime revamping of Sarroch jetty moorings. The analysis requested a feasibility study for the maritime requalification of 2 existing platforms to receive vessels with a bigger DWT than the current one (respectively from 6000 DWT to 9000 DWT and from 18000 DWT to 25000 DWT). The study allowed the issue of a technical specification for NDT investigations, useful to define the necessary parameters for the detailed design of the interventions concerning the structure requalification.
2013	ALBIZZATI SPA	Fatigue and in service analysis of two high temperature flue gas exhaust ducts located downstream of two turbines positioned on the semi-submersible platform of the Ichthys Upstream Project - AUSTRALIA.
2013	LINEA KAPPA	design and works management of interventions for crawl space reinforcement with steel structures and safety fire requirements check in SOLO INTER shop - Milan
2013	TECNOMARE	technical evaluation of the offer (for the civil and structural part) concerning competitive tenders of POWER GENERATION and SHIPYARD for ENI/AGIP KARACHAGANAK
2013	SAIPEM	Detail analyses (calculations and drafting) of Elettra platform 78 m water depth. The analyses include loadout, transportation and lifting. The platforms will located in the Adriatic Sea.
2013	SAIPEM	drawings of the fundamental and secondary structures of the changes expected for deck revamping, new extensions calculations and related report - ZATCHI PRJ CONGO
2013	REDECAM GROUP SRL	design of bag filters COMASA - CHILE
2013-2014	GESCO / DEMONT	structural check of the heat recovery boiler HRSG of TEMPA ROSSA
2013	ANORS STEEL CONSTRUCTIONS SRL	development of 3D model and drawings of workshop of cold box structure assembly and related footbridges - Tekla model
2012	TENOVA	design of 8 belts made up of SELF-SUPPORTING BEAMS, GALLERIES, PIERS AND TORRE PUNTI, STRUCTURE OF PAGODA INTERIOR FOR PLANT
2012	C.S. IMPIANTI	High-Speed Train - structural, hydraulic and architectural project and drawing of SCATOLARI IN REINFORCED CONCRETE called Roggia Sircone, ROGGIA MORLETTA, ROGGIA NAVAREZZA, IN90 and IN26 sited in the Province of Bergamo, MILANO – BRESCIA section of MILANO – VERONA line.
2012	THERMOENGINEERING SRL	structural calculations for FLAKE PACKAGE PK-2500

2012	SAIPEM	seismic vulnerability check of strategic buildings R&M plants/storages in accordance at ordinance 3274/2003 and S.M., DL 216/2011
2012	TECNOMARE	technical evaluation of offers (for the civil and structural part) concerning 6 degassing plants, power generation, power transmission and oil gathering in the competitive tender of Zubair oil field - Iraq
2012	TECHNITAL - GLF	Structural analysis for the design of the jetty of Vado Ligure. The analysis has requested verification of the displacements in static and seismic conditions in order to optimize the size of the expansion joints and the actions on the support systems. The checks were conducted in accordance with the Italian rules NTC2008 and with EC 8.
2012	INARCHECK	Validation of structural project and supervision assistance for a bridge on Recco torrent - B. Assereto street - Recco (Genoa)
2012	CENTRO ENERGIA FERRARA	seismic analysis in accordance with D.L. n.74 del 06/06/2012 for structures of every building of CEF station in Ferrara
2012	VAILLANT DE	check of fundamental and secondary structures state - factory of Pontenure after the seism occurring in May 2012
2012	ALPHARMA PFIZER	check of fundamental and secondary structures state - factory of Medolla after the seism occurring in May 2012
2012	REDECAM	check and project of the supporting structure of ducts concerning the CTT project - TOCOPILLA (CHILE) with AISC360-05 LFRD codes and "NORMA CHILENA"
2012	SAIPEM	modeling and analysis of MONOPALO and connecting bridges to the CMMP platform and survey in Iraq
2012	SAIPEM	basic engineering of three platforms BOZICA, ILENA E IKA
2012	GESCO/DEMONT	Structural analysis of steel structure for ENEL Nuclear Power Plant in Mockovce
2011-2012	SAIPEM	Structural design and calculation of module for Staatsolie Refinery Expansion Project - Suriname. Analysis of different phases of construction: lifting procedure, transportation procedure, load out phases
2011-2012	CONDOMINIO PIAZZA RISORGIMENTO 7 MILANO	design, supervision and safety supervision for box autosilos reinforcement works
2011-2012	ITALGEN - ITALCEMENTI GROUP	preliminary design of reinforced concrete buildings for the wind power plant of EL ZAYT GULF - egypt
2011-2012	SAIPEM	FEED Designs for steel structures modules - LNG Woodside - Browse Plant - Australia. Analysis of different phases of construction, lifting procedure and in-service condition.
2011	BROFIND	various chimneys design (Italy and Europe)
2011	CREMONESI CONSULENZE SRL	design, security, supervision and municipal practices of a building in Largo Crocetta 2 - Milan
2011	SAIPEM	drawing of the mooring of Taranto Tempa Rossa
2011	FLSMIDTH MILANO	steel structures check for bridges of settling basins
2011	SAIPEM	modeling and fatigue analysis of Elettra and Fauzia platforms
2011	ARKETIPO	design of offices buildings ABUJA (NIGERIA) for SAIPEM
2011	TECNOMARE	adaptation of decks with ICAO codes
2011	SAIPEM	estimated civil quantities control for foundations and structures and insertion A SIOC for various offers
2011	DOTT. SALVATORE SPINNATO	design, works management and security coordination for the restoration of the single U.I.
2011	SAIPEM	drawing of WAD and deck platform West Franklin
2011	MWH	Design and structural analysis of subway reinforced concrete basins for BreBeMI highway
2011	MERLONI PROGETTI	structural design of photovoltaic power station Roccamena - Sicily
2011	SAIPEM	structural check of life boats for LUNA A platform
2011	P.E. BERGAMASCHINI	design of air casing/insulation works and heating systems for property in Via Pordenone 6 A Milan
2011	ALSTOM POWER	calculation of direct foundations for silos plant Craiova
2011	SAIPEM	feasibility analysis of 2 platforms VS1 and VS2 in the Persian Gulf - Iraq
2011	TECNOMARE	ITT drafting and offers technical evaluation ZUBAYR GREEN FIELD
2010	SAIPEM	basic design of deck basement PLTF FROY
2010	CEPAV UNO	Drawing check for database INRETE2000 High Speed Railway - Milan - Bologna
2010	REDECAM	design and drawing of compressors building, existing structure check of the reactor - chile
2010	SAIPEM	civil engineering for plant EST FERRERA ERBOGNONE
2010	SAIPEM	check of JACKET PLTF WAIST - HASBAH
2010	SAIPEM	development of graphic arts and PREDIMENSIONAMENTO of steel structures with related foundations - EBOCHA T6 OIL&GAS NIGERIA project

2010	SAIPEM	SAIPEM UK - project of the fundamental structures (3800 TON) of the WEST FRANKLIN platform (UK- NORTH SEA) in the North Sea. Sea depth of 92M
2010	PETROFAC	check of steel and reinforced concrete structure inside KHURSANIYAH plant
2010	SAIPEM	drafting of calculation reports and graphic arts for "OCGT POWER PLANT - NIGERIA" project
2010	REDECAM	mechanical drawing for the transformation of the electrical precipitator in the bag filter for EDELNOR CHILE plant
2010	REDECAM	structural analysis, plinths and pilings calculation AIN TUTA project - ALGERIA
2010	CONDOMINIO PIAZZA RISORGIMENTO 7 MILANO	design of structural reinforcement intervention of 4 basements of AUTOSILO-BOX
2010	ISTITUTO DEI CIECHI DI MILANO	structural design works management and manager of works for the flooring remaking of SALA BAROZZI - VIA VIVAIO 7 - MILANO
2010	SIIRTEC NIGI	drawings check for the project of PORTOVAYA C/O branch of Saint Petersburg - RUSSIA
2010	SAIPEM	preliminary design of comparison between steel and reinforced concrete structures placed in the new "PERU" NITROGEN COMPLEX" plant
2010	CEPAV UNO	valorization of modifications and integrations for as built emission of maintenance plans of the Milan-Naples High-Speed railway line Milan-Bologna section
2010	SIIRTEC NIGI	support to the design of PORTOVAYA C/O SEDE DI MUMBAI project - India
2010	SAIPEM	preliminary design of comparison for buildings of the new "PERU" NITROGEN COMPLEX plant - UNITA' AMMONIA"
2010	PARROCCHIA SAN GEROLAMO EMILIANI	design, d.l. and safety coordination for works of architectural barriers elimination and flooring and church front improvement
2010-2012	FONDAZIONE GIROLA ONLUS	design of static structures for "garret recovery of buildings in Piazza Castello 24/26 in Milan"
2010	DOTT.SSA MASTROVITO	design and DL "internal restoration of real estate unit in Via Gramsci Rozzano (MI)"
2010	SAIPEM	building design for civil works of the gas power plant of River State - Nigeria
2010	DOTT.SSA PROBO	design and dl "internal restoration of real estate unit in Via Marghera Milan"
2009	ITALGEN - ITALCEMENTI GROUP	preliminary design of reinforced concrete buildings for a wind power plant in Turkey
2009-2010	SAIPEM	structural check, drafting of graphic arts and calculations for the revamping and the extension UREA BOREALIS plant in LINZ
2009	C.S. IMPIANTI	design of MLE PROJECT ALGERIA SAIPEM-ABB
2009	GRUPPO 2A	calculation and drawing of foundations and plinths of a stretched flexible structure of Ischia
2009-2010	SAIPEM ENERGY SERVICES	civil engineering services of SANNAZZARO EST project
2009	ALSTOM POWER	Preliminary calculation of plant structures and getter/absorber - PORTO TOLLE
2009	TECNOMARE	KASHAGAN DEVELOPMENT EXPERIMENTAL PROGRAM PROJECT - structural recheck of pipe racks on cofferdam
2009-2010	CONDOMINIO ADRIANA - VEDANO AL LAMBRO (MI)	project, supervision and safety coordination for "box restoration"
2009	SAIPEM ENERGY SERVICES	existing mooring extension in refinery - Taranto
2009	FOSTER WHEELER ITALIANA	feasibility study COGEN of AUGUSTA (SR)
2009	SAIPEM ENERGY SERVICES	creation of 3D peperack model, loading platforms and existing structures extension study of the refinery in Gela
2009	HAUER SRL	project of interventions of structural reinforcement of local sites in Via TOMASO 6 in MILAN
2009	SAIPEM ENERGY SERVICES	drafting of drawings and 3d model PIATTAFORMA WEST ESPOIR project
2009-2010	ALSTOM POWER	design of ducts first final phase and supporting structures ILVA TARANTO
2009	FOSTER WHEELER ITALIANA	dynamic and spectral analysis of concrete and steel structure supporting COKE DRUMS - L'AQUILA
2009	REDECAM	check and design of Tarragona intervention
2009	REDECAM	project for ducts and supporting structures of plant in Algeria
2009	SAIPEM ENERGY SERVICES	drafting of drawings and 3D model project of DEBORAH A platform
2009	REDECAM	control and adaptation of bag house - LAFARGE - SAINT PIERRE - FRANCE
2009	TECNOLASER SRL	design of offices building and shed in ROMANO DI LOMBARDIA (BG)
2009	ALSTOM POWER	structures preliminary design of plant in Craiova - Romania
2007-2009	P.I.ED. PEDRAZZINI ANGELO	design and works management of residential buildings in CERNUSCO SUL NAVIGLIO (MI)
2008-2009	ALSTOM POWER	design of denitrification foundations of sines plant - Portugal

2008	IMMOBILIARE SCAGER	design, supervision, general inspection, legge 10, energetic certification, security plan for a new building in Carugate (MI)
2008	ISTITUTO DEI CIECHI DI MILANO	design and safety coordination for restoration works of Barozzi hall, roofing remake, new house-family hall
2008	SAIPEM ENERGY SERVICES	upgrade of calculation models, lifting analysis and sea transport Thekah project
2008	CONDominio VIA MARCO D'AGRATE 25/07 MILANO	structural design, work assistance, REI certification
2008	FONDAZIONE DON CARLO GNOCCHI MILANO	scaffolding design for FONDAZIONE DON CARLO GNOCCHI MILANO
2008	FRASCARI IMPRESA EDILE	design of steel and reinforced concrete structures for CASA CAMPANA restoration
2008	SAIPEM ENERGY SERVICES	detailed engineering for upgrading TORRE J-LAY SAIPEM 7000
2008	REDECAM	design of support structures for plant filter - Belgium
2008	REDECAM	design of support structures impianto polpaico - CHILE
2008	REDECAM	project for load-bearing capacities check of structures factory MOHA - BELGIO
2008	PARROCCHIA SAN GEROLAMO EMILIANI	architectural, structural, plant design, works management, safety coordination and free-fighting design for the requalification of parish spaces
2008	TECNOMARE	design and drawing of structures of COMPAQ MONOPODE platform in 65M of depth
2008	SAIPEM ENERGY SERVICES	civil engineering services - MASTER PLAN LNG LBIYA
2008	REDECAM	project of steel structures supporting machinery and plants- VERA CRUZ - MEXICO
2008	ITALGEN - ITALCEMENTI GROUP	Upgrading design and supervision for the electrical power plant of Mazzuno (BS)
2008	COMUNE DI CARUGATE	design of works of parking requalification in Via Roma
2008-2010	SAIPEM ENERGY SERVICES	Detailed design of the steel prefabricated modules T20 and T18 (1840 tons) of the Floating Storage and Regasification Unit (F.S.R.U.) - O.L.T. Project - located off the coast of Livorno (Italy) in the Tyrrhenian Sea. The construction of the modules in United Arab Emirates field required the analysis of different phases: sea transportation with grillage and seafastening, lifting, load-out and in-service condition.
2008	SAIPEM ENERGY SERVICES	tuna platform project: calculation report and development of project drawings with related MTO
2008	SAIPEM ENERGY SERVICES	Bakara platform project: calculation report, drafting of drawings, MTO
2008	REDECAM	BOSNIA ERZEGOVINA project: design of supporting steel structures DOBOJ
2008	REDECAM	OHA 1 & 2 project: design of steel structures of ducts support
2008	FOSTER WHEELER ITALIANA	AHPHT ANTWERP project (BELGIO): development of technical documents
2008	MAIRE ENGINEERING	Bocamina II project: design of structural, architectural FGD Auxiliary Building and related foundations. Design of gypsum silos complex and related foundations; design of the basements of the equipment placed a quota 0.0 inside FGD auxiliary building
2008	SNAMPROGETTI	development of drawings, calculations and calculation reports for equipment foundations - ENGRO PROJECTS
2008	EBX ENGINEERING	Bocamina II project -Chile: civil works (drawings and calculation reports)
2008	FABIO RIBOLDI	design and d.l. of the building in Via Pio XI 57
2008	REDECAM	check of steel structures project and drafting of calculation report signed in accordance with LEGGE 1086 COLACEM CARAVATE
2008	REDECAM	project of steel structures for support of machinery and plants katrana cement project - Algeria
2007	SNAMPROGETTI SPA	check of workshop drawings for steel structures QATOFIN PROJECTS
2007	MSC ASSOCIATI SRL	executive design of the glass wall of the south-side building of the GARIBALDI REPUBBLICA complex
2007	IDRECO SPA	check of the structural works design ENDESA CHILE
2007	LITWIN ITALIA SRL	preliminary plan of civil works - EL SOKHNA FERTILIZER COMPLEX
2007-2008	E&M SERVICES SPA	civil engineering services EBOCHA and EBOCHA 2 STAND ALONE GAS CONFIGURATION FEED - NIGERIA
2007	FOSTER WHEELER ITALIANA	PSL resident in Brussels for civil design activity for pharmaceutical use to be fulfilled in WAVRE
2007/09	E&M SERVICES SPA	civil engineering services M'BOUNDI FIELD UP-GRADING & REVAMPING - CONGO
2007	PERI S.P.A.	Design of a new productive structure in 1° MAGGIO street in POZZAGLIO (CR)- reinforced concrete structure and safety fire

2007	Condominio C.so Italia 6 Milano	design and supervision for safety fire, design and structural works
2007	MSC ASSOCIATI SRL	executive design of steel structures which are the supporting basement of the pinnacle placed on the tower A covering in GARIBALDI REPUBBLICA complex
2007	ISC sas	Design of a temporary structure to reinforce the access bridge of the Hydroelectric Power Plant - ITALGEN - San Giovanni Bianco (BG)
2007	ESEDRA srl	Drawing of viaducts structures of Agrigento motorway exit
2007	SEI s.p.a.	modifications of EDIFICI PFIZER ITALIA restoration project
2007	PLT FILOSOFIA DELLO SPAZIO SRL	structural design, works management, safety coordination, heating and air-conditioning plant - LOFT restoration of Via MECENATE in MILANO
2007	ARKETIPO	concrete buildings project for MAADEN PHOSPHATE PROJECT - SAUDI ARABIA
2007	MSC ASSOCIATI SRL	drawing, nodes calculation and steel structures check for 3 buildings of GARIBALDI REPUBLIC complex
2007	POLARIS SCARL	Design and drawing of steel and reinforced concrete structures with related reinforced concrete foundations, equipment foundations, sea water intake and everything concerning civil works - BANDAR ABBAS plant - IRAN - SNAMPROGETTI
2007	FOSTER WHEELER ITALIANA	PSL activity (PROJECT SECTOR LEADER) for civil design activity project BD0341A - TANECO NHR REFINERY
2007	ING. PAOLO ELLI	calculation and drawing of restoration works for PFIZER factory of Nerviano
2007	REDECAM	steel structures calculation
2007	FOSTER WHEELER ITALIANA	PSL activity (PROJECT SECTOR LEADER) for civil design activity project BD0344A - IES refinery in MANTOVA
2006	SNAMPROGETTI - POLARIS	Design and drawing of steel structures for oil treatment plant OIL&GAS of Khurais (ARAMCO - Arabia Saudita). Steel structures for racks and related foundations.
2006	FOSTER WHEELER WHEELER	project of civil and structural activities coordination in refinery design in KUWAIT
2006	FOSTER WHEELER WHEELER	activity of civil supervisor in SAMIR refinery design - Tunisia
2006	FOSTER WHEELER WHEELER	project of civil and structural activities coordination in IES refinery - mantova
2006	SEI SAIPEM ENERGY INTERNAZ.	structural adaptation project of different off-shore rigs - ASHTART - TUNISIA
2005-2007	SNAMPROGETTI S.p.A.	Design and drawing for structures for oil treatment plant OIL&GAS of Khursaniyah (ARAMCO Saudi Arabia). Steel structures for racks. Normal and prefabricated reinforced concrete racks. Rack Foundations and special structures. Reinforced concrete structures for buildings (Control Electrical Building)
2006	FOSTER WHEELER WHEELER	project of civil and structural activities coordination in NHR refinery design - Tatarstan
2006	CASA COOPERATIVA POPOLARE PADANA s.c.r.l.p.a.	2 buildings of 5 houses each and 3 duplex buildings: design and works management
2006	Condominio Viale Giustiniano, 10 Milano	design and works management for building restoration - 3.000 m3
2006	ESEDRA	SINA Company Barriera di Ventimiglia - steel structure for tollgate
2006	FOSTER WHEELER WHEELER	project of civil activities coordination in CONOCO refinery design - Germany
2006	SAIPEM ENERGY INTERNAZ.	predimensionamento of Jacket platform and deck in Banga (Congo). Analyses carried out Inservice, lifting, loadout transport.
2006	SAIPEM ENERGY INTERNAZ.	preliminary design of Jacket platform and deck of LITDNJILI (Congo). Analyses carried out Inservice, lifting, loadout transport.
2006	SAIPEM ENERGY INTERNAZ.	EI GAMIL piperack revamping (Egypt)
2006	SEI SAIPEM ENERGY INTERNAZ.	project of modules to be installed on FPSO vessel - Angola
2006	SEI SAIPEM ENERGY	various projects for the structural revamping of platforms - Egypt
2006	TECHINT - ITALIMPIANTI GE	extension of iron alloy plant structures for steel mill in Brazil
2006	TECHINT S.p.A	study for new steel mill decks
2005/2006	TECHINT S.p.A	structures for new LF3 plant Sidor steel mill - Venezuela
2006	ING.CARNIELLI	concrete structure for high building (17 floors) in Cernusco s/Naviglio
2005	FOSTER WHEELER WHEELER	boiler structure for Lomellina 2 Cogeneration Station
2005	IMMOBILIARE ERMINIA Creadaro (BG)	Design and supervision of work of concrete diaphragm (perimeter 270 m), post-tensioning anchorages and jet-grouting (area 2.770 m2) – excavation depth 5,5 m. – ISEO Lake.
2005	ISMES S.p.A	landside support work project in ACI CASTELLO (CT) in accordance with the new seismic order
2005	Parrocchia SS. Apostoli Filippo e Giacomo di Covo (BG)	new Pastoral Centre design (activity started in 2001)

2005	SAIPEM ENERGY INTERNAZ.	Preliminary design of 4 modules for FPSO GIMBOA (Angola). Analyses inservice, lifting, transport
2005	SAIPEM FRANCE	fatigue analyses for Deep Water Turret - Rosa Field - ANGOLA - depth of 1300 m
2005	SEI SAIPEM ENERGY INTERNAZ.	jacket design - depth of 86 m - 1600 tons - AWA PALOUKU - CONGO
1997-2005	SNAMPROGETTI S.p.A.	consulting and coordination activity for structures construction project for Milan-Naples High-Speed Railway line, Milan-Bologna section (CEPAVUNO)
2004-2005	SNAMPROGETTI S.p.A.	structures for oil treatment plant OIL&GAS in Qatif (ARAMCO Asaudi Arabia). Steel structures with related foundations. 500 tavole
2005	VOEST ALPINE	steel structures project for ladle support
2005	VOEST ALPINE	steel structures project for smoke filtering plant BES phase 2
2005	CONDOMINIO VIA GATTAMELATA 38 MILANO	design and work management for garret recovery works and new underground garages creation
2004	CEPAVUNO	Maintenances specifications documents of galleries, subways, overpasses, embankments, viaducts, roads and railways and Po River Bridge about T.A.V. – HIGH SPEED RAILWAY – (300 km/h) – section from Milan to Bologna (180 km) of Railway line Milan – Naples. Technical document preparation and training document presentation
2004	Comune di BUSTO ARSIZIO (VA)	design and works management for new gym structure of via Pascoli - Busto Arsizio; mechanical structures and plants project
2004	COSTRUZIONI BASSO ARMANDO DE SANCTIS	buildings structure project in Carugate
2004	FOSTER WHEELER WHEELER	design and works management for condominium in Milan
2004	FOSTER WHEELER WHEELER	project for chemical plant in earthquake area ASPROPYRGOS - GRECIA
2004	ISMES S.p.A	study of jetty X c.e. Rossano Calabro
2004	ISMES S.p.A	feasibility study for structural adaptation of Electric power plant of Porto Tolle for trasformazione a carbone
2004	SAIPEM ENERGY INTERNAZ.	Revamping project of Platforms in Nigeria - 120 tavole
2004	SAIPEM ENERGY INTERNAZ.	project of two platforms: a monopode and a tripod in Egypt
2004	ISMES S.p.A	executive project of structural works of the new sub-way in Bergamo (piles, bulkheads, tanks, bridges, pozzetti)
2004	VOEST ALPINE	steel structures project for smoke filtering plant BES Ispat Karmet - Carinox - Zapsib
2004	CAVA RAVELLI	reinforcement intervention
2003	EDAM	project of soil support works for powerhouse reclamation in Turbigo
2003	FOSTER WHEELER WHEELER	See water intake project in Tunisia
2003	PASSONI	new dwelling building project
2003	PIAMARTA	project for Piamarta Centre restoration via Pusiano 52 Milan - new canteen project 200 seats
2003	SAIPEM ENERGY INTERNAZ.	project of TEMSAH4 platform jacket (Egypt). Weight of 1800 ton. Analyses carried out Inservice, loadout, lifting, transport and fatigue
2003	SAIPEM ENERGY INTERNAZ.	project of BALTIM platform jacket (Egypt). Weight of 1800 ton. Analyses Inservice, loadout, lifting, transport and fatigue
2003	SAIPEM ENERGY INTERNAZ.	nodes stress analysis of jacket path of SABRATHA (h 205m), analysis carried out with ANSYS jacket weight of 26500 ton.
2003	SAIPEM ENERGY INTERNAZ.	stress analysis of jacket Pile sleeve cluster of SABRATHA (h 205m), analysis carried out with ANSYS pile sleeve weight of 800 ton
2003	Agenzia Torino 2006, XX Olympic Winter Games	Detailed structural design of the steel and reinforced concrete decks with two lanes, continuous spans (about 400 m length) and different spans 35 m, 40 m and 60 m. Total length 2600 m. National Road n. 23 del Sestriere in the section San Germano – Perosa Argentina. Chisone Valley (Turin).
2003	Municipality of S. OMOBONO TERME (BG)	Detailed design of enlargement of the Provincial Road n. 14 for the construction of sidewalks and overcoming architectural barriers from the "Modern Bar" area to the bridge over the Pettola torrent, by means of reinforced concrete piers anchored in the rock and prefabricated pre-stressed reinforced concrete decks. Nine spans and total length 100 m.
2003	SNAMPROGETTI S.p.A.	coordination for the execution of elaborates concerning structures monitoring: the Artificial Polycentric Tunnel in Somaglia (GA06), the frame Artificial Tunnel in Melegnano (B.P.) (GA02), the prefabricated reinforced concrete Guardamiglio Viaduct (VI11), the Ospedaletto Viaduct, with a steel-plain concrete mixed structure (VI08), and the normal reinforced concrete Cavo Sillaro Viaduct with incorporated steel beams (VI06).

2003	SNAMPROGETTI S.p.A.	preparatory analysis with finite elements models for the execution of railway sub-way test in the construction project of Milan-Naples high-speed railway line Milan-Bologna section
2003	TECHINT S.p.A	project for LF Palanquillas plant revamping (Venezuela) (about 70 tav) - earthquake area
2003	VOEST ALPINE	steel structures project for smoke filtering plants - Sidmar - Kosice
2002	EMIT S.p.A.	preliminary plan for new filters installation for Thermoelectric power plant Enel in Piombino and Livorno
2002	FOSTER WHEELER WHEELER	preliminary plan for steel shed for turbines room in Voghera (about 800t)
2002	SAIPEM ENERGY INTERNAZ.	analyses of three FPSO MySTRAS modules, the analyses include fatigue, lifting, inservice
2002	TECHINT S.p.A	Revamping project of steel of Moubarrakesh(Iran)
2002	VAIM	preliminary design of structures for hood for Valsugana steel (about 100t)
2001	Comunità Piamarta Milano	Formazione Giovanni Piamarta Association - accomodation community, canteen and café - project of properties and d.l restoration: steel and reinforced concrete structures and reinforcement interventions (activity started in 1999)
2001	CONSORZIO SIBA - DEGREMONT	preliminary design of structures of the new wastewater treatment plant in Peschiera Borromeo (per gara)
2001	HAMON	design of supporting structures for industrial plants, design of steel silos and tanks, design of bag filter for new depuration plant in Filago
2001	SAIPEM ENERGY INTERNAZ.	analysis and drawing of CALIPSO platform deck. Weight of 480 ton.
2001	TEKNE	structural design of canteen and offices building for Caleffi in Fontaneto
2001	TEKNE	design of shed foundation caleffi in Fontaneto
2001	TEKNE	structural design of offices building in Gattico
2001	VAIM	project of structures for coffin afonica for foundry (dimensions: 20x20x15 m) factory Belgium
2000	Municipality of VILLA D'OGNA (BG)	Connections detailed design of pedestrian steel bridge on Serio River
2000	Municipality of S. OMOBONO TERME (BG)	Structural, architectural, electrical and mechanical system design of concrete gymnasium with steel roof (15.000 m3) - 400 spectators with seat - Amount of work € 1,000,000